

# **Michigan Dairy Industry Conference**

## **Holland, MI**

# **Michigan's Growing Dairy Industry**

May 14, 2015



*Michigan Department of Agriculture & Rural Development*

**Terry Philibeck**

Deputy Director

Dairy Program Manager

Food and Dairy Division



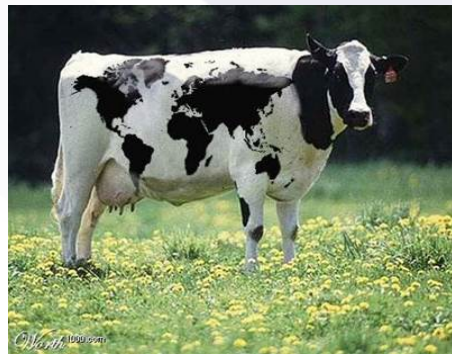
# Dairy Section

## Staff Changes

- Dairy Resource Specialist: Lindsey Giles-Austin, Nov. 17, 2014
- New Dairy Staff started Nov. 10, 2014:

| <u>Name</u>    | <u>Workstation</u> | <u>Region/Supervisor</u> |
|----------------|--------------------|--------------------------|
| BOOTH, Michael | Midland County     | Dairy EAST/Koeltzow      |
| CARR, Ellen    | Kalamazoo County   | Dairy WEST/Robinson      |
| HASH, Patrick  | Lapeer County      | Dairy EAST/Koeltzow      |

- State Rating Officer (Karen McNamara's position): Brian Cogar, Feb. 9, 2015





## Dairy Section

- Michigan Ranks seventh nationally in milk production
- Michigan farms produced 9.6 billion pounds in 2014 or 1.9 billion gallons. March 2015 was up 7%
- 1,894 dairy farms – 404,000 cows
- 1,621 Grade A farms
- 273 Manufacturing farms (can milk)





## Dairy in Michigan

- Agriculture contributes \$101.2 billion to Michigan's economy
- Dairy is Number 1 commodity in gross value at \$1.9 billion in 2013
- Fastest growing dairy state east of the Mississippi in production and new facilities
- Industry invested \$1.3 billion over the past four years.



## Milk Production trend

- 2014 – Milk Production was 9.6 billion pounds
- 2013 – Milk Production was 9.1 billion pounds
- 2012 – Milk Production was 8.9 billion pounds
- 2011 – Milk Production was 8.6 billion pounds
  
- March 2015 Production per cow is 68.2 pounds per day! 2014 averaged **less** than 200,000 SCC.
  
- In the last four years production is up 1.02 billion pounds or 11.88% and 26.24% in the last 7 years.
  
- 2007 - Milk Production was 7.62 billion pounds



# Top Dairy States 2014

1. California – 42.337 billion pounds
2. Wisconsin – 27.795 billion pounds
3. Idaho – 13.873 billion pounds
4. New York – 13.733 pounds,
5. Pennsylvania – 10.683 billion pounds
6. Texas – 10.310 billion pounds
7. Michigan – 9.609 billion pounds
8. Minnesota – 9.127 billion pounds
9. New Mexico – 8.105 billion pounds
10. Washington – 6.584 billion pounds



## Dairy Statistics

- Dairy Plants – 92
- Voluntary Milking Installations (Robots) – 30
- Bulk Milk Samplers – 814
- Milk Tank Trucks – 703
- Milk Production March – 852 million lbs
- Average Farm Size – 198 milking cows
- Average Production per cow – 24,116 lbs
- 1965 Average – 7,500 lbs/cow, 35 cows/farm
- 1965 – 12,000 farms; 2015 – 1,894 dairy farms



## **Plant Construction/Expansion**

DFA, Cass City – 1.8 million lbs/day

MMPA/Foremost – Reverse Osmosis

Verndale Products, Detroit – Spray Roll Dried Milk

MMPA, Ovid – Butter Churn

Continental/fairlife – 4 million/day

Philos Greek Yogurt

21 new or pending artisan processors

Farms – Milk Source, Roto Z, Steenblik, Beaver Creek.





# Top Ten World Innovative Products



# Questions?



*Michigan Department of Agriculture & Rural Development*

**Stay connected with MDARD!**



Michigan Department  
of Agriculture



@MichDeptofAg



Mlagriculture